

HITACHI
Inspire the Next



Diagnostic Ultrasound System MODEL: F37

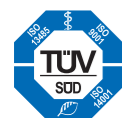


ALOKA
illuminate the change

F37

DIAGNOSTIC ULTRASOUND SYSTEM

- The specifications, shape and color of this product are subject to change without notice.
- The standard components and optional items vary depending on the country.



We strive to provide quality products and services for our customers.
We operate with regard for the environment.



Hitachi Aloka Medical, Ltd.

6-22-1, Mure, Mitaka-shi, Tokyo, 181-8622 Japan
Telephone : +81 422 45 6049 Facsimile : +81 422 45 4058 www.hitachi-aloka.com

Enhancing Simplicity
Meet the user-friendly F37.



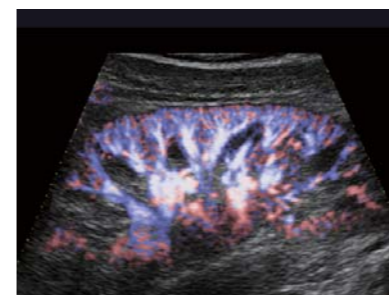
Small
and
Simple

Compact and Practical Design

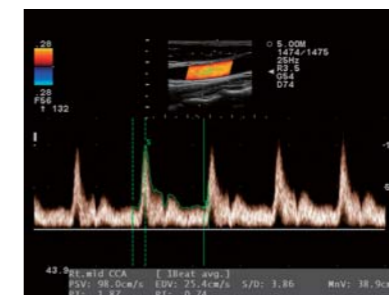
- **Light weight and with a small footprint**, F37 enables nimble transport and comfortable examinations. How did we attain the small size? The equipped, enhanced, and evolutionary 3E Platform is what makes this possible. Because its many functions are software based, it is not only compact but also provides faster processing, lower power consumption, and future upgradeability.
- **Simple operation for a concentrated examination.** F37's intuitive switch layout with the minimum number of switches for daily examinations and measurements provide just the necessary functions at your hand.

- **Naturally operate the system** at the height of writing on a desk or standing with the height adjustable operation panel. This panel can also be swiveled left and right. With the flexibility of the operation panel and monitor, optimum positions for your examinations are provided.
- **Cable management** from the front, side and back of the system keeps probe, power and other cables neat and tidy. The side pocket can also be used for holding ultrasound gel bottles, record cards, foot switches, and other small items.

Smart and Clear Imaging



■ **With excellent sensitivity**, *e*FLOW displays blood flow in detail to the very fine vessels in the kidney.



■ **With Auto Angle Correct**, blood flow velocity can smoothly be measured with high accuracy.



■ **The high quality zoom** of F37 allows you to enlarge your target area while maintaining the high frame rate. The fetal heart can be observed in high-resolution imaging.

Data Management

- Acquired image and video data can be stored as digital data. Reconstruction using FAM can also be done with stored Line data.
- Reports for measurements can easily be displayed for a variety of examinations in various clinical applications.

Small, Simple, and Safe

F37 is a reliable system in various work environments.

- F37 is another one of our eco-friendly systems, complying with WEEE Directive.
- Teaching File hides and protects personal information by hiding patient information from acquired images.
- Stable practical use is supported by F37's large capacity HDD.