



Diagnostic Ultrasound System MODEL : PROSOUND 2

prosound 2

- The specifications, shape and color of this product are subject to change without notice.
- The standard components and optional items vary depending on the country.

Hitachi Aloka Medical, Ltd.

6-22-1, Mure, Mitaka-shi, Tokyo, 181-8622 Japan
 Telephone : +81 422 45 6049 Facsimile : +81 422 45 4058
www.hitachi-aloka.com



We strive to provide quality products and services for our customers.
 We operate with regard for the environment.



Printed in Japan 2011-01 E258-3 © (D)





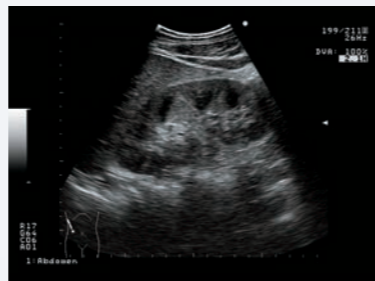
Simple, Easy and Friendly Portable Ultrasound System

The ProSound 2 has been developed to meet the demand for high image quality in a portable unit. It features user-friendly simple operation with a variety of probes, making it ideal for today's increasingly diverse examination environment thanks to its enhanced flexibility and ingenuity.

Abdomen



Liver

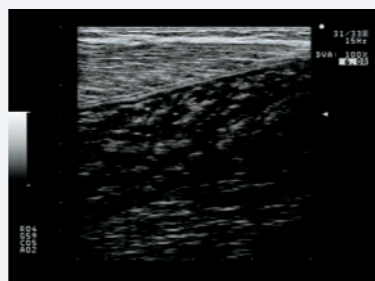


Kidney

Musculoskeletal

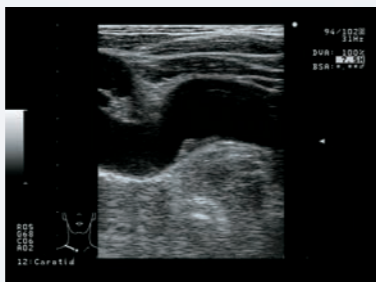


Articulatio humeroradialis



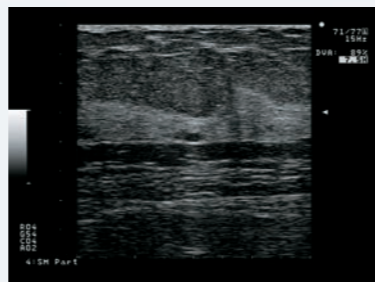
The gastrocnemius muscle

Carotid



Subclavian Artery IMT thickening

Brest



Brest cyst

OB / GYN



Fetal profile



Fetal heart

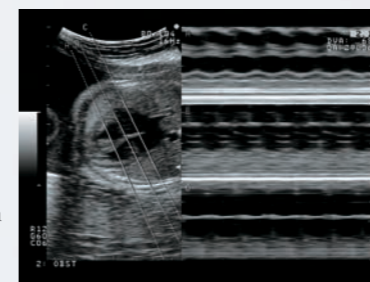
Obstetrics Report

The measurement results are stored in the built-in memory as patient information. The historical data of a fetus are plotted on the growth trend graph for comparison. Growth of a fetus can be seen at a glance and observation over time is quick and easy. Follicle measurements for fertility treatment can also be displayed in the report.



FAM (Free Angular M-mode)

Up to three M-mode cursors can be set at any position and in any direction on a B-mode image. For example, you can set the cursor optimally to accurately examine the heart function irrespective of the direction and position of the fetus.



Probes

A variety of probes are available for a wide range of applications.



UST-9137
Electronic compact convex sector probe



UST-9111-5
Electronic micro-convex probe



UST-5551
High-resolution electronic linear probe



UST-9145
Electronic convex sector probe for endocavitary use



High image quality technologies established in high-end models of the ProSound series are incorporated into the system

Extended Pure Harmonic Detection (ExPHD)

The second harmonic is effective for greatly reducing artifacts generated by multiple echoes and side lobes. Tissue Harmonic Echo by the phase-modulation method offers images with higher sensitivity and resolution.



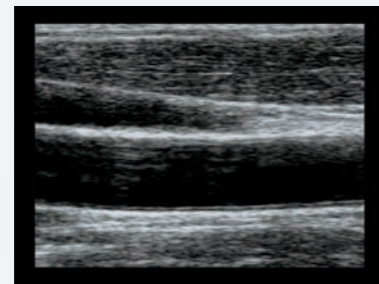
ExPHD:OFF



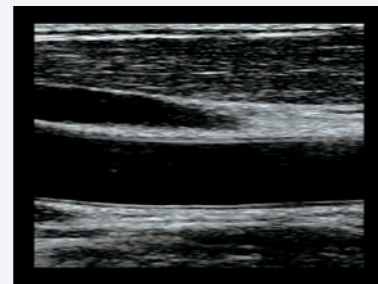
ExPHD:ON

Edge Enhancement Function

This function highlights the periphery of tissues. By clarifying contours, the structures of vessels, especially the intima, are displayed with good continuity and are easy to observe.



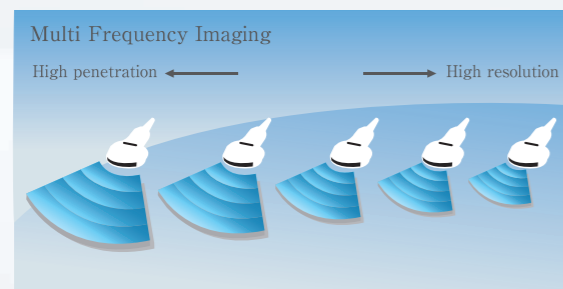
Soft



Hard

Multi Frequency Imaging (MFI)

It is possible to select the most suitable frequency from among multiple ones according to the patient's physique or the depth of the region of interest with a single probe.



Streamline your workflow in the digital environment

Simple and Compact

Easy for everyone

Frequently used switches are arranged around the trackball. The self-illuminated switches and full keyboard are easy to view and operate.



Compact and easy to carry

It is possible to carry the system with the necessary probes and an ultrasound gel bottle mounted. Examination can be initiated immediately at any place.



Save the data to the built-in memory and various media

Ultrasound images, measurement results, patient information and reports are stored and managed in the large-capacity built-in memory with no deterioration. A USB memory port is equipped as standard, which is useful for copying the data. The system is compatible with the DICOM 3.0 standard. Worklist management enables acquisition of patient information and reservation information from the worklist server, thus eliminating entry errors.

