

HUBER[®] MOTION LAB

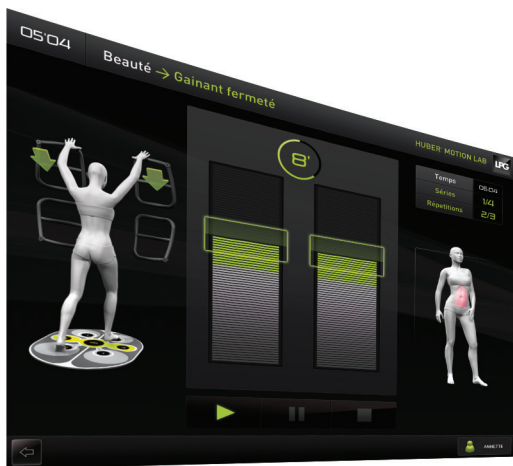
Effective

Intuitive

Adaptable

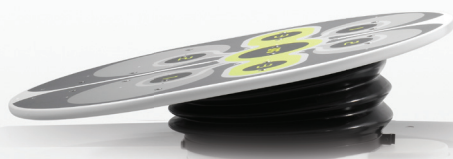
Fun





OSCILLATING PLATFORM

- › A high amplitude oscillating platform with a 24 cm vertical travel (without vibration).
- › Adjustable locking system for the HU-pads (8 positions)



LPG SOFT

- › PC software for personalized monitoring.



TOUCHSCREEN WITH 400+ EXERCISES

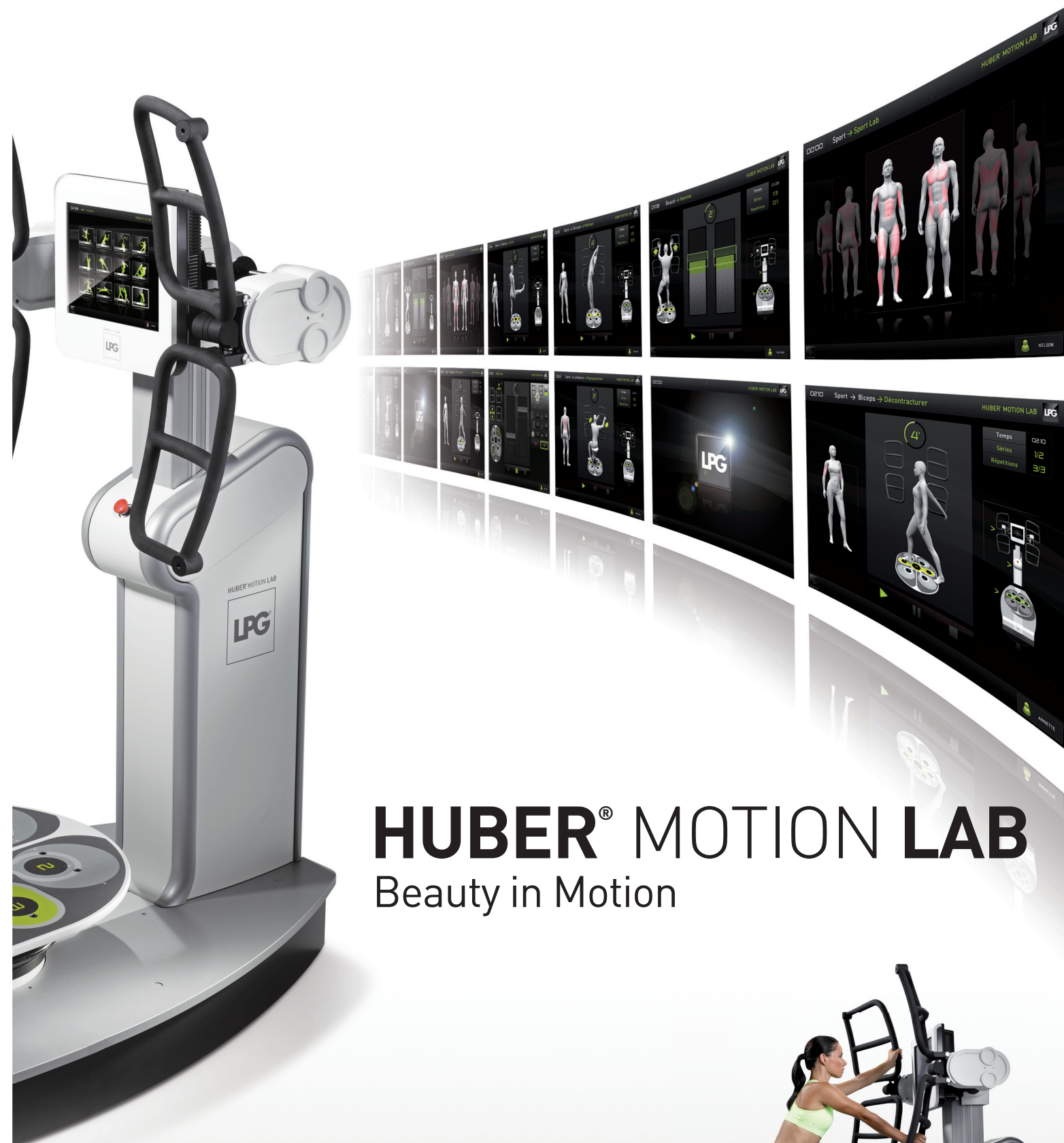
- › 3D position display.
- › Intuitive and ultra-precise programs.
- › Several targets to visualize direction of effort.



MOBILE COLUMN

- › The column height automatically adjusts to the operator's height.
- › Various scanning capabilities.





HUBER[®] MOTION LAB

Beauty in Motion



FORCE SENSORS

- › 4 separate handlebars with variable resistance and mobility for dynamic muscle contraction.
- › Removable extensions for each handlebar.



Weight : 310 kg
Dimensions (L x l x h) : 1.95 x 1.30 x 2.48 m
Floor surface area: 2.5 m²
Electrical characteristics:
 100-240 V / 50-60 Hz
Force sensor: 100 daN
Column movement: 40 cm
Platform angle: 0° to 10°
Oscillation frequency: 0 to 41 RPM
Maximum weight supported by the platform: 150 kg
Color touch-screen: 17"''
Intel Atom: 1.6 GHz
USB Port: 3



HUBER® MOTION LAB is the only technology in the world that proposes an interactive and personalized program to resculpt the silhouette in a record time and without wasted effort. Smart and adaptable exercises with customizable profiles to give effective fat burning results while improving posture.

Protocols tailored to beauty, well being and sport.

ACCESSORIES

HU-PULSE :

A Suunto® heart rate meter that displays the operator's pulse on the screen to help select the correct intensity.



HU- MOTE :

A remote control for more comfortable use.



HU-PADS :

Two foot pads with variable angle of elevation (10° increments) and rotational position (15° increments)



HUBER[®] MOTION LAB

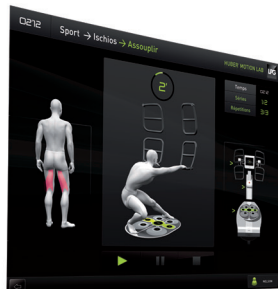
Versatile

Adaptable

Intuitive

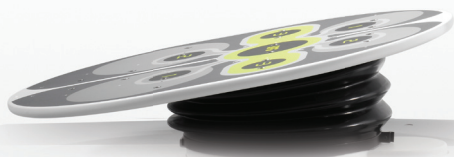
Fun





MOBILE PLATFORM

- › Variable speed and amplitude platform with a simple to use accessory attachment system.
- › 8 HU-pad positions and 3 HU-seat positions.



LPG SOFT

- › PC software for personalized monitoring.



TOUCHSCREEN WITH 400+ EXERCISES

- › 3D position display.
- › Intuitive and ultra-precise programs.
- › Several targets to visualize direction of effort.



MOBILE COLUMN

- › The column height automatically adjusts to the operator's height.
- › Various scanning capabilities.





HUBER[®] MOTION LAB

A True Human Motion Laboratory



■ FORCE SENSORS

- 4 separate handlebars with variable resistance and mobility for dynamic muscle contraction.
- Removable extensions for each handlebar.



CHARACTERISTICS

Weight : 310 kg
 Dimensions (L x l x h) : 1.95 x 1.30 x 2.48 m
 Floor surface area: 2.5 m²
 Electrical characteristics:
 100-240 V / 50-60 Hz
 Force sensor: 100 daN
 Column movement: 40 cm
 Platform angle: 0° to 10°
 Oscillation frequency: 0 to 41 RPM
 Maximum weight supported by the platform: 150 kg
 Color touch-screen: 17"''
 Intel Atom: 1.6 GHz
 USB Port: 3



With its easy and intuitive state-of-the-art technology, **HUBER® MOTION LAB** is truly a human motion laboratory that can strengthen **deep as well as superficial muscles**, mobilize **joints**, modify **body composition**, correct **posture**, and improve **coordination** and **balance**. Multiple applications for health, beauty, and sports.

ACCESSORIES



HU-PULSE :

A Suunto® heart rate meter that displays the operator's pulse on the screen to help select the correct intensity.

HU- MOTE :

A remote control for more comfortable use.



HU-SEAT :

- > An articulated stool for those with limited mobility.
- > Angle adjustable from 0 to 15 degrees.
- > Safety lock on the platform.



HU-PADS :

Two foot pads with variable angle of elevation (10° increments) and rotational position (15° increments)



HUBER[®] MOTION LAB

Relieve

Stretch

Mobilize

BACK IN
MOTION



HUBER[®] MOTION LAB



Reinforce

Burn fat

Resculpt

**BACK IN
MOTION LPG[®]**