

Cellu M6[®] Endermolab



Upgradable

Accessible

Effective

Compact





INTEGRATED LPG COACH

- Adjustable **color touch screen**.
- Step-by-step preconfigured care protocols to visually follow the progress of Endermolift and Lipomassage sessions.
- 180° screen rotating mobility.

BODY MODULE

New Ergodrive care head

- **Unprecedented depth of tissue grabbing** for greater effectiveness.
- **Independent motorized rollers** (LPG patents) for high-precision treatment.
- Control screen, integrated commands, and rotating head for **greater usability**.
- **4 rotations** of rollers for personalized results (Slim down, Firm, Resculpt, Smooth).



FACE MODULE

3 new Lift care heads.

- **More dynamic cellular stimulation**.
- Adjustable lift for each skin type.
- **3 intensity settings** for high-precision redensifying (Clarify, Replenish, Firm).



ADAPTABLE CONNECTIVITY

- **Plug & Care technology** for greater flexibility.
- USB port for **regular LPG update downloads** (new protocols).





Cellu M6[®] Endermolab

Body and face care

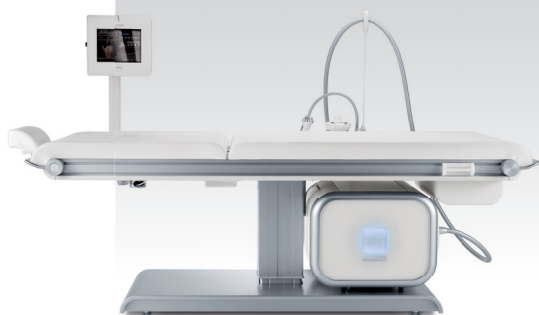
High-technology slimming and anti-ageing

- PREMIUM TREATMENT TABLE**
- Adjustable height and reclining back-rest.
 - White leather and chrome finish.
 - Prestige comfort.



CHARACTERISTICS

Weight: 140 kg
Dimensions: (l x w x h) 185 x 70 x 149 cm
Frequency: 1 to 16 Hz
Pressure: 690 mbar
Output: 20 m³/h
Sound level: 56 dBA
Electrical characteristics:
 100-240V / 50-60Hz / 625-650 W
Colour touch screen: 10"4
Energy-saver mode: YES
Audio: YES
USB Port: YES



Endermologie is an exclusive technique of **cellular stimulation by mechanotransduction**. Created by LPG in 1986, it enables **100% natural** care of fat storage and ageing skin.



ERGODRIVE HEAD

The driving seat of the system which accommodates 3 different KM Roll.



80 mm
70 mm
50 mm

KM ROLL

Exclusive LPG patent: independently motorized rollers.

KM80: (NEW) specifically for large areas (fat reduction and smoothing).

KM70: Firming and anti-ageing.

KM50: specifically for narrow areas (fat reduction & smoothing).



TML 10
TML 20
TML 30

LIFT HEADS

TML 10: Lips and eye contours.

TML 20: Entire face.

TML 30: Chest and neckline.



TR 15
TR 30

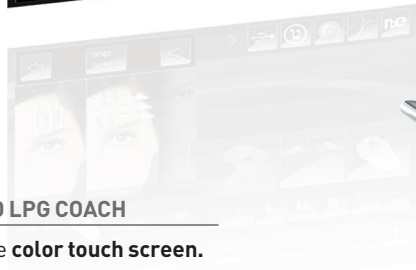
AUXILIARY HEADS

For access to smaller areas.



Cellu M6[®] Endermolab





INTEGRATED LPG COACH

- Adjustable **color touch screen**.
- Pre-configured treatment protocols.
- 180° screen rotating mobility.

THERAPEUTIC MODULE

New TR50 treatment head

- Specially designed for therapeutic applications.
- **Independent motorized rollers** (LPG patents)
- 3 settings for high-precision tissular grabbing (deep or superficial).
- Control screen and integrated commands.



BODY MODULE

New Ergodrive treatment head

- **Unprecedented depth of tissular grabbing** for greater effectiveness.
- **Independent motorized rollers** (LPG patents) for high-precision treatment.
- Control screen, integrated commands and rotating head for **greater usability**.
- **4 rotations** of rollers for personalized results (Slim down, Firm, Resculpt, Smooth).



FACE MODULE

3 new Lift treatment heads

- **More dynamic cellular stimulation**.
- Adjustable lift for each skin type.
- **3 intensities** for high-precision redensifying (Clarify, Replenish, Firm).





Cellu M6[®] Endermolab

Body and face treatment

High-technology therapeutics and aesthetics

PREMIUM TREATMENT TABLE

- Adjustable height and reclining back-rest.
- White leather and chrome finish.
- Prestige comfort.

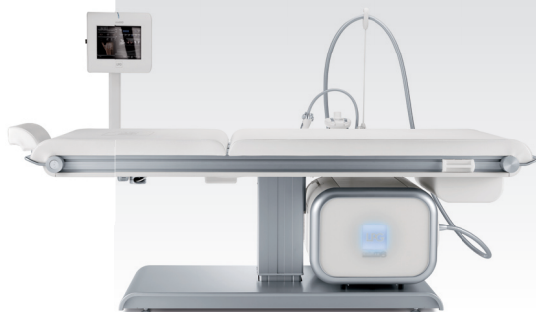
ADAPTABLE CONNECTIVITY

- **Plug & Care** technology for greater flexibility.
- USB port for **regular LPG update downloads** (new protocols).



CHARACTERISTICS

Weight: 140 kg
Dimensions: (l x w x h) 185 x 70 x 149 cm
Frequency: 1 to 16 Hz
Pressure: 690 mbar
Output: 20 m³/h
Sound level: 56 dBA
Electrical characteristics:
 100-240V / 50-60Hz / 625-650 W
Colour touch screen: 10"4
Energy-saver mode: YES
Audio: YES
USB Port: YES



Endermologie is an exclusive technique of **cellular stimulation by mechanotransduction**. Created by LPG in 1986, it enables a **100% natural** treatment of **connective tissue transformations** for beauty or therapeutic purposes.



ERGODRIVE HEAD

The driving seat of the system which accommodates 3 different KM Roll.



80 mm

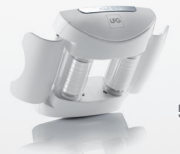
KM ROLL

Exclusive LPG patent: independently motorized rollers.



70 mm

KM80: (NEW) specifically for large areas (fat reduction and smoothing).



50 mm

KM70: Firming and anti-ageing.

KM50: specifically for narrow areas (fat reduction & smoothing).



TR50

Dedicated to therapeutic applications: fibrosis, oedema, inflammation, pre- and post-liposuction etc.



TML 10

LIFT HEADS

Therapeutic (oedema, fibrosis) and aesthetic (anti-ageing) face treatment.



TML 20

TML 10: Lips and eye contours.

TML 20: Entire face.



TML 30

TML 30: Chest and neckline.



TR 15

AUXILIARY HEADS

For access to smaller and delicate areas (lesions, scars etc).



TR 30



MICRO-NOZZLES AND MICRO-HEADS

For therapeutic micro-targeted action (fingers for example).

